



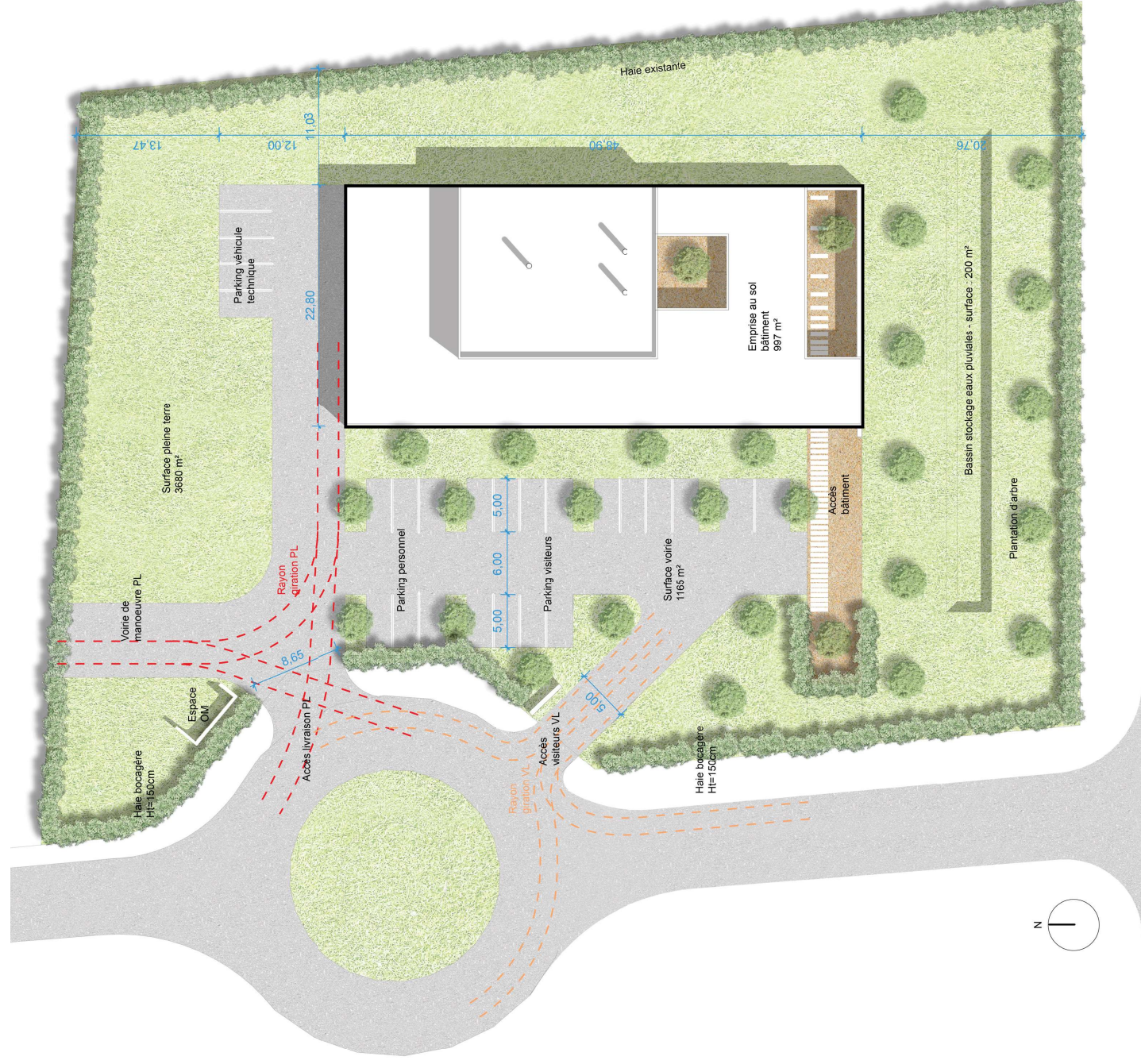
Construction d'un crématorium animalier  
à Saint Martin des Entrées

## ETUDE DE FAISABILITE

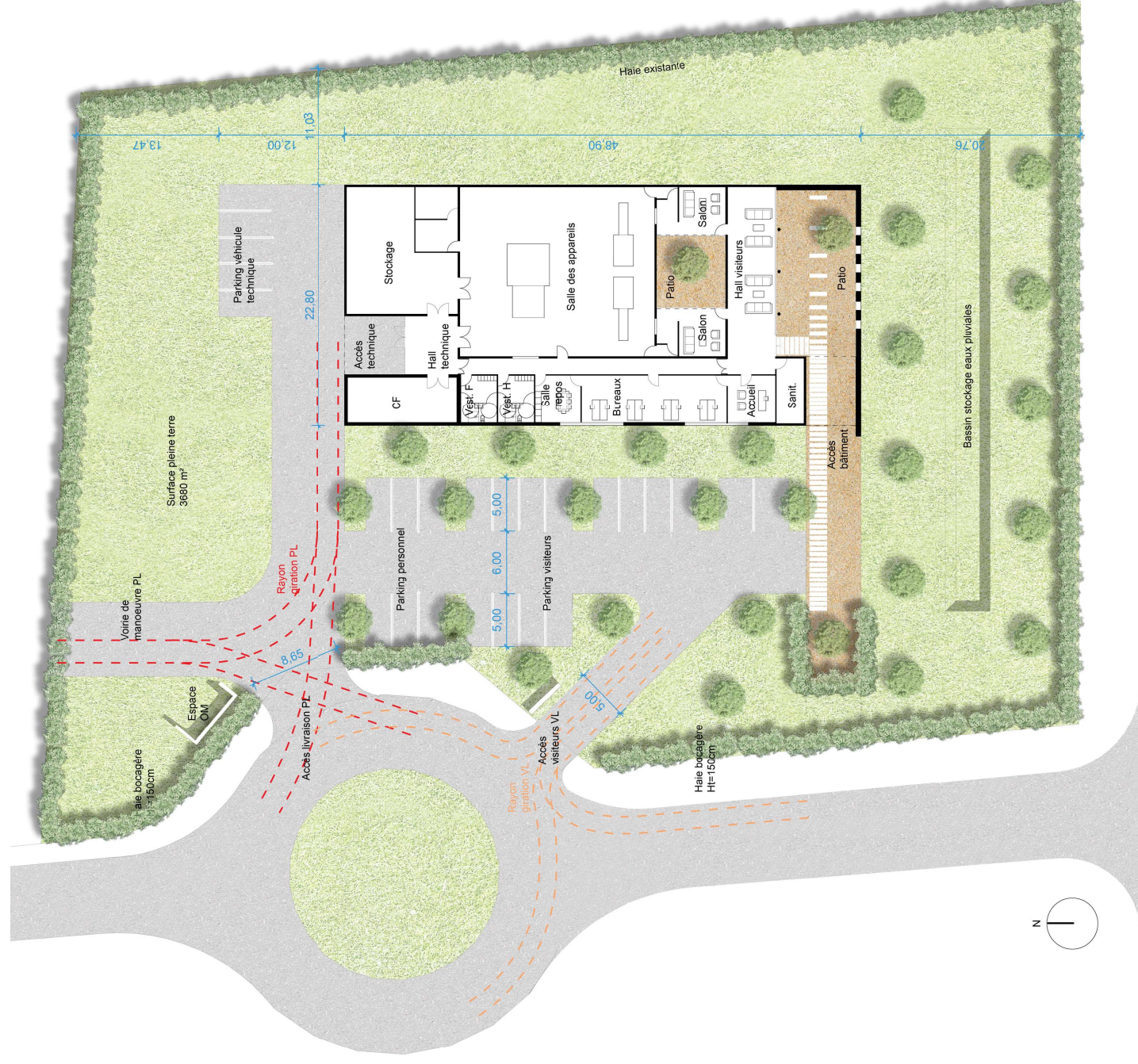
pour Construction d'un crématorium animalier,  
ZAE des Longchamps - Saint Martin des Entrées  
dossier de présentation du 16 juin 2021



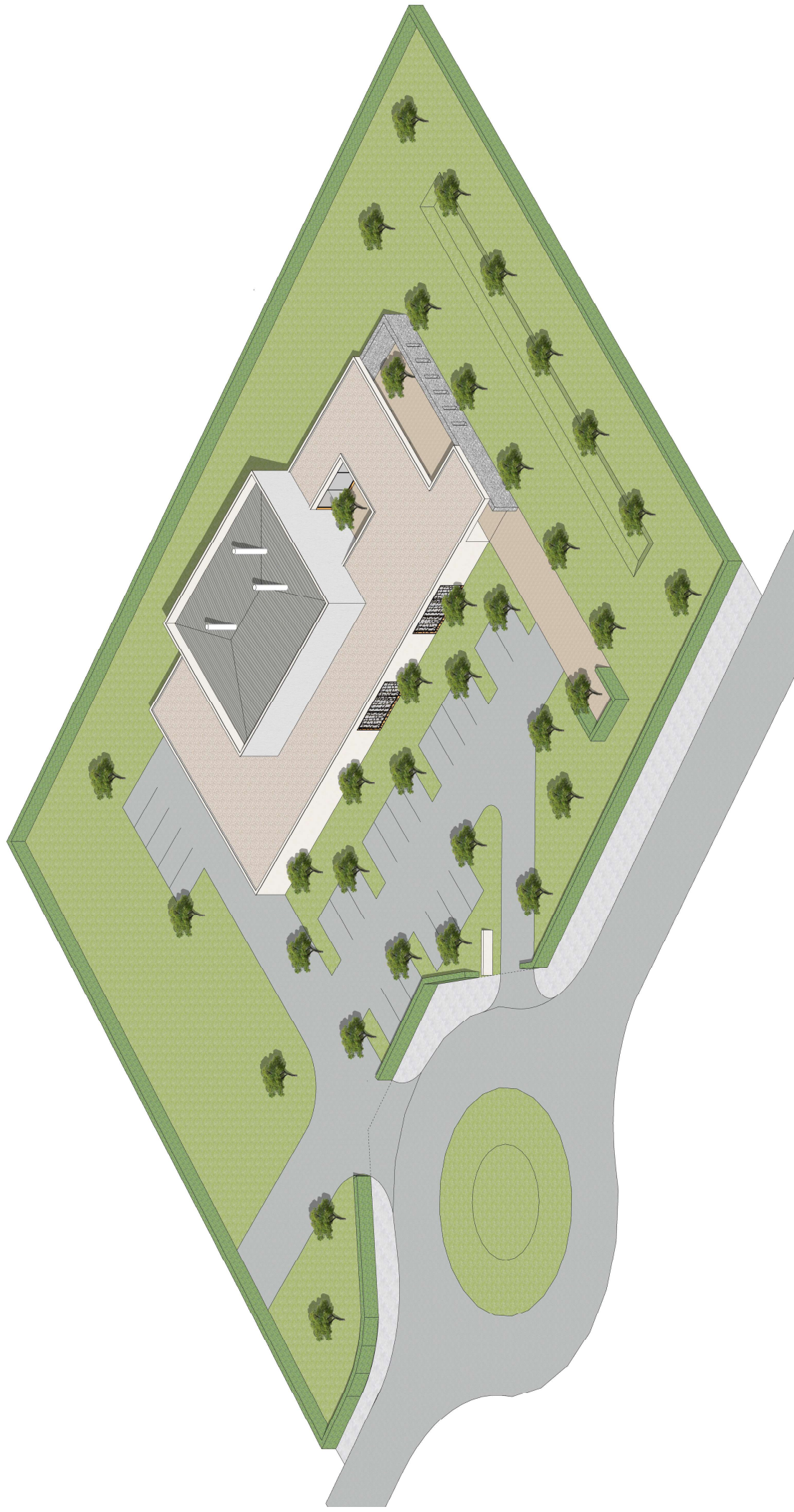


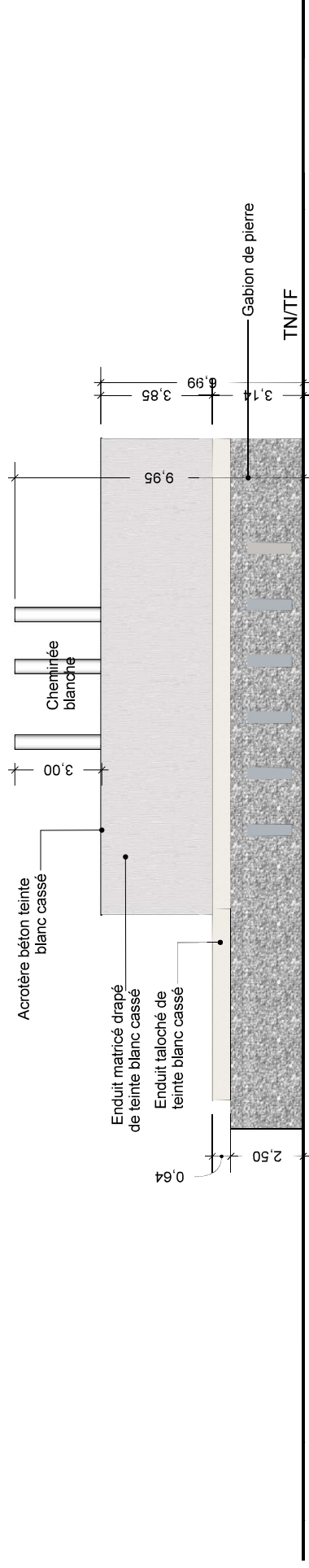




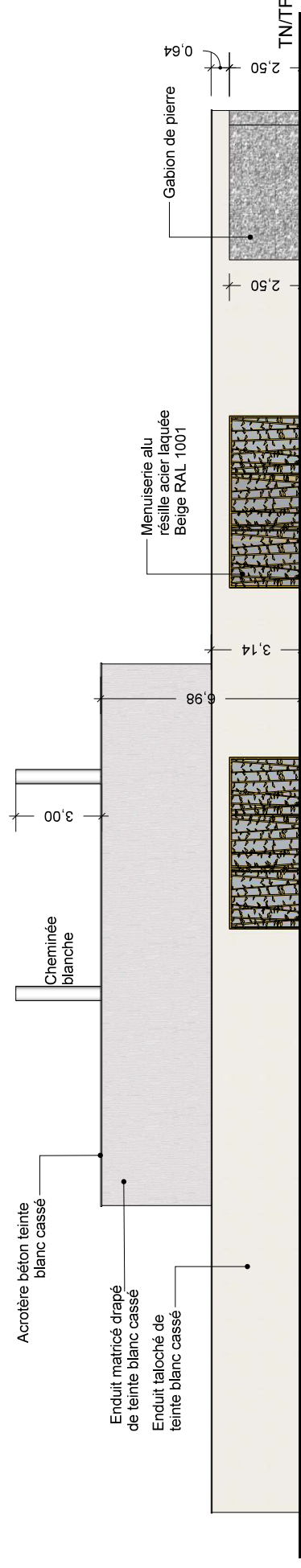




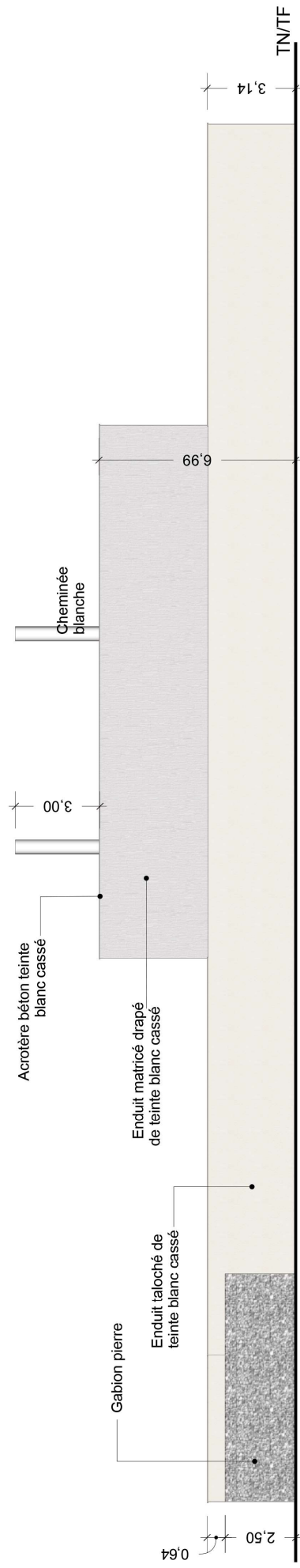




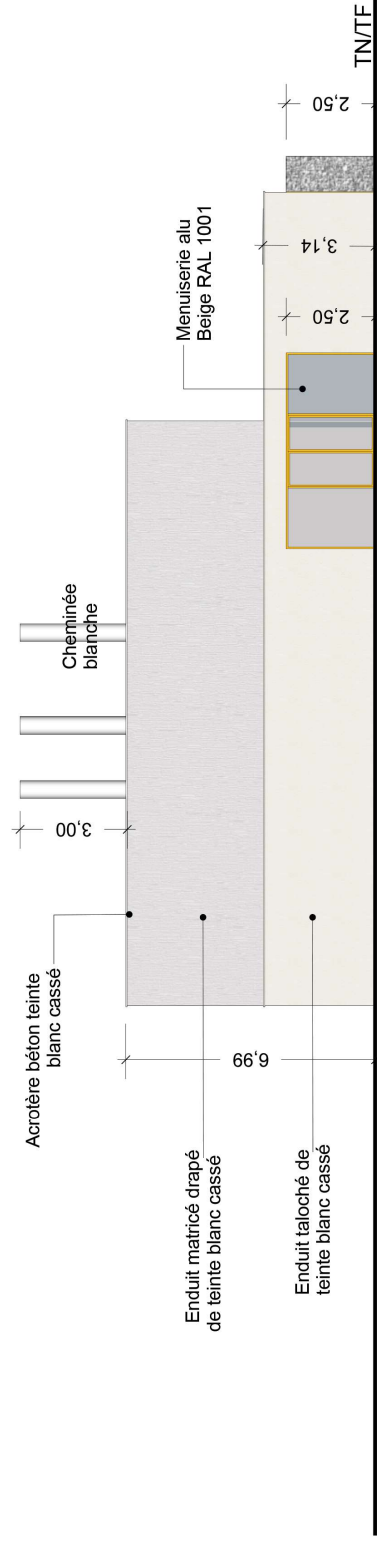
ELEVATION DE FACADE SUD



ELEVATION DE FACADE OUEST



ELEVATION DE FACADE EST



ELEVATION DE FACADE NORD



