
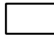



Stratégie locale de gestion du risque d'inondation (SLGRI) Evaluation Préliminaire des Risques (EPRI)





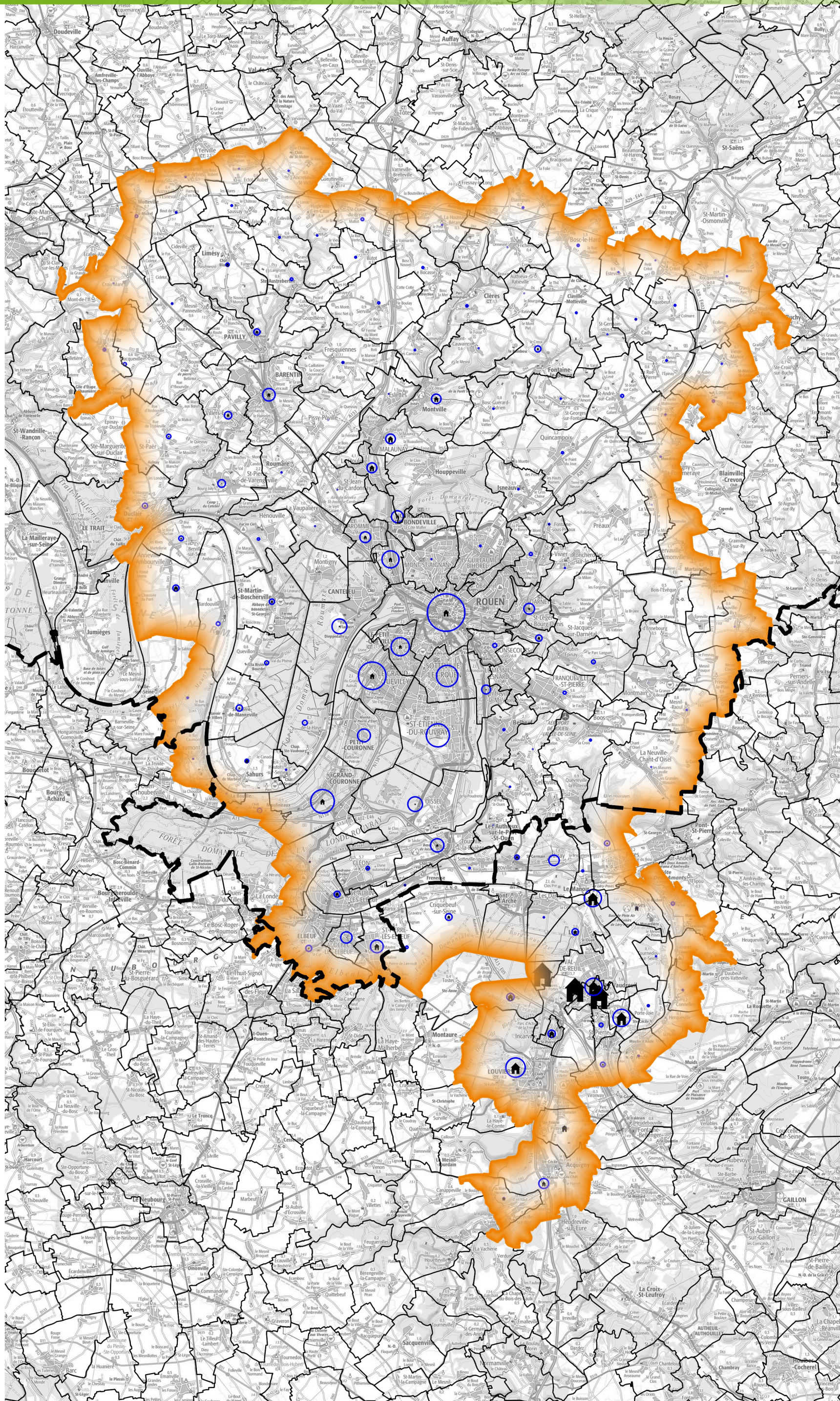
-  Périimètre SLGRI
-  Limites des communes
-  Limites des départements

Emprise des bâtiments d'activités de plain pied

-  1 027 380 m²
-  84 837 m²

Emprise des bâtiments d'habitation sans étage

-  46 464 m²
-  27 684 m²



Sources :
© IGN
© DREAL Normandie

Production:
Le 15/03/2016 - DREAL-NORMANDIE

Référence:
JD-2016-03-15T11:10:40

