
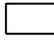



Stratégie locale de gestion du risque d'inondation (SLGRI) Evaluation Préliminaire des Risques (EPRI)



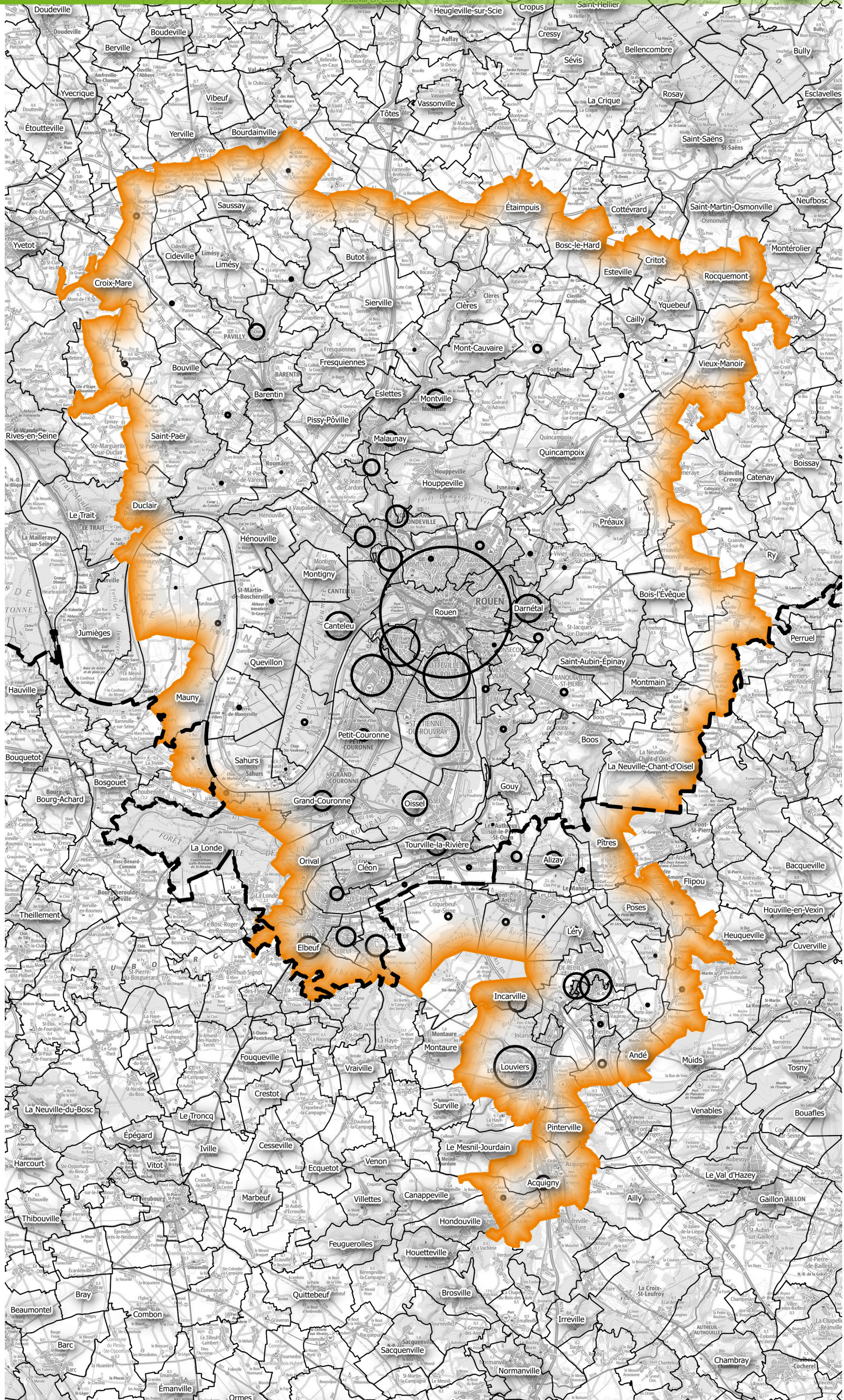
-  Périmètre SLGRI
-  Limites des communes
-  Limites des départements

Emplois en zone inondable par commune

60000

2000

500



Sources :
© IGN
© DREAL Normandie

Production:
Le 23/03/2016 - DREAL-NORMANDIE

Référence:
JD-2016-03-23T10:34:28

0 4 8 km

