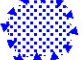



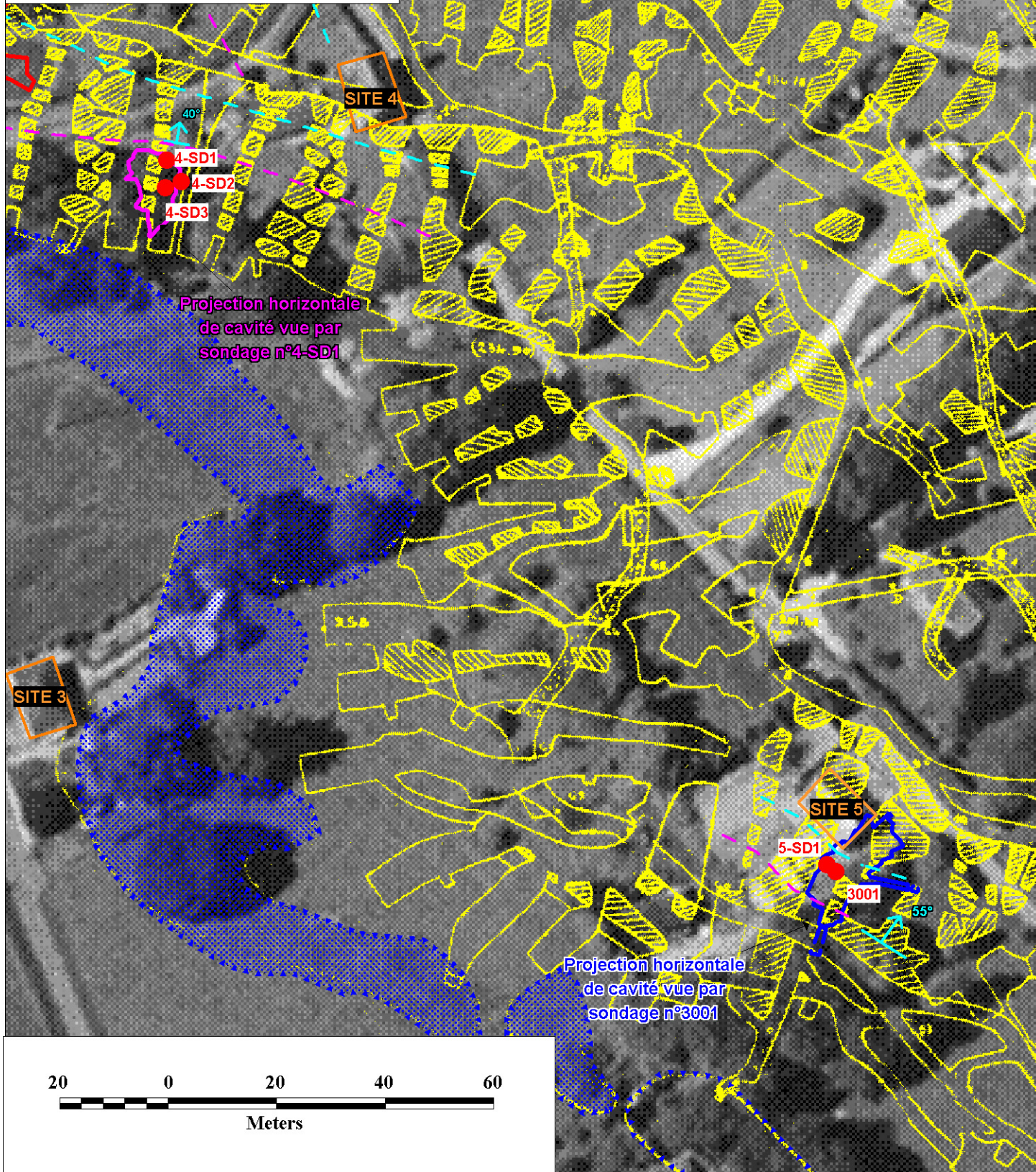
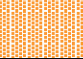
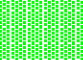


Planche 2 : Synthèse cartographique des investigations menées sur les sites d'enjeu n°3, 4, 5 et mise à jour de l'aléa effondrement localisé - La Ferrière-aux-Etangs (61)

-  FOUILLES COMBLEES
-  ENJEUX BATIS
-  LIMITE PROFONDEUR 30 M
-  LIMITE PROFONDEUR 50 M



**ALEA EFFONDREMENT LOCALISE**

-  NIVEAU MOYEN
-  NIVEAU FAIBLE

