

1

2

3

GONFREVILLE-L'ORCHER-76305

OULDALLE-76489

SANDOUVILLE-76660

SAINT-VIGOR-D'YMONVILLE-76657

LA CERLANGUE-76169

TANCARVILLE-76684

LILLEBONNE-76384

PORT-JEROME-SUR-SEINE-76476

### Légende

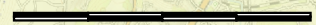


— Canalisations 14" (Remise en service)

— Canalisations existantes

- - - Communes concernées

0 1 2 3 4 km

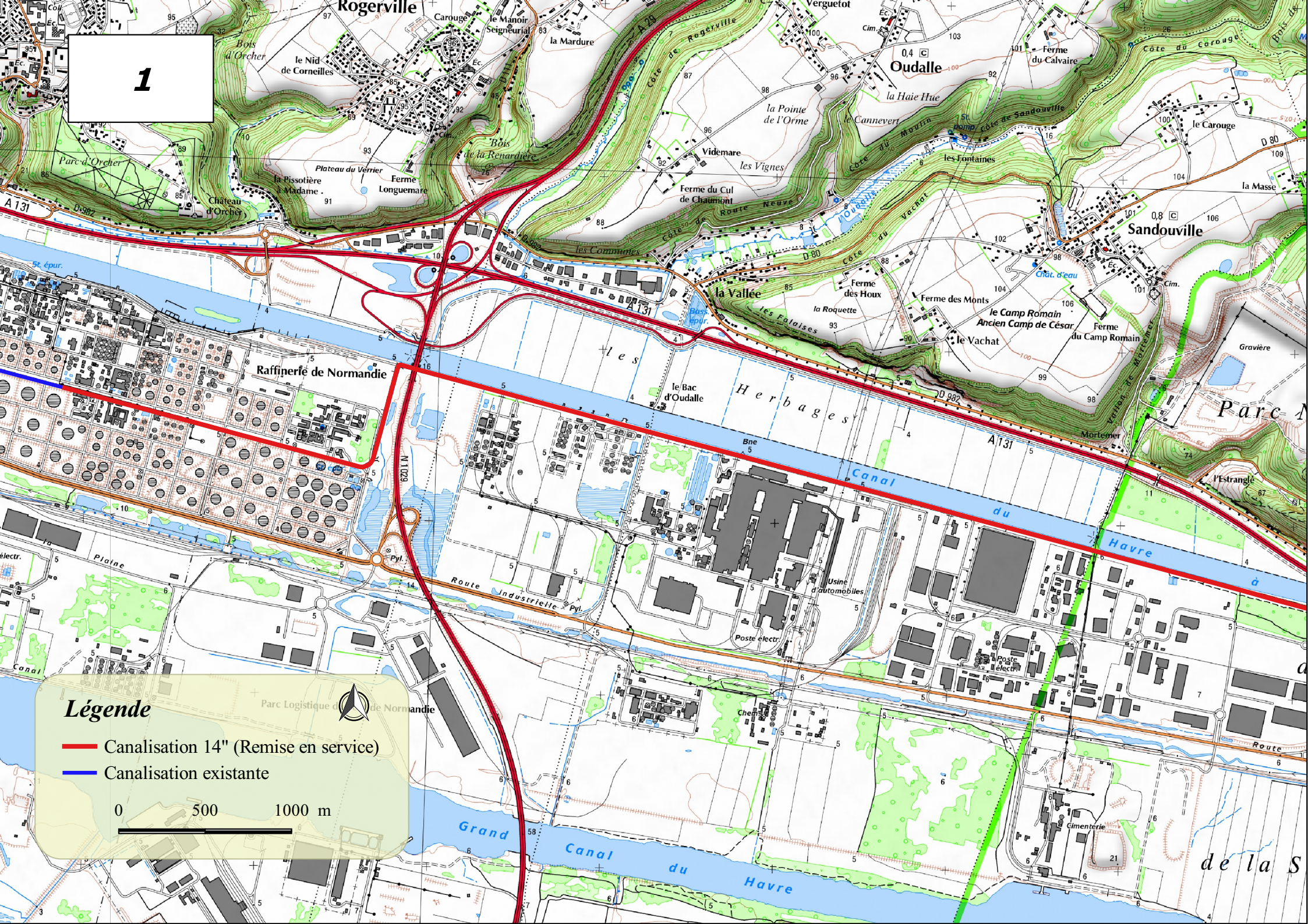


1

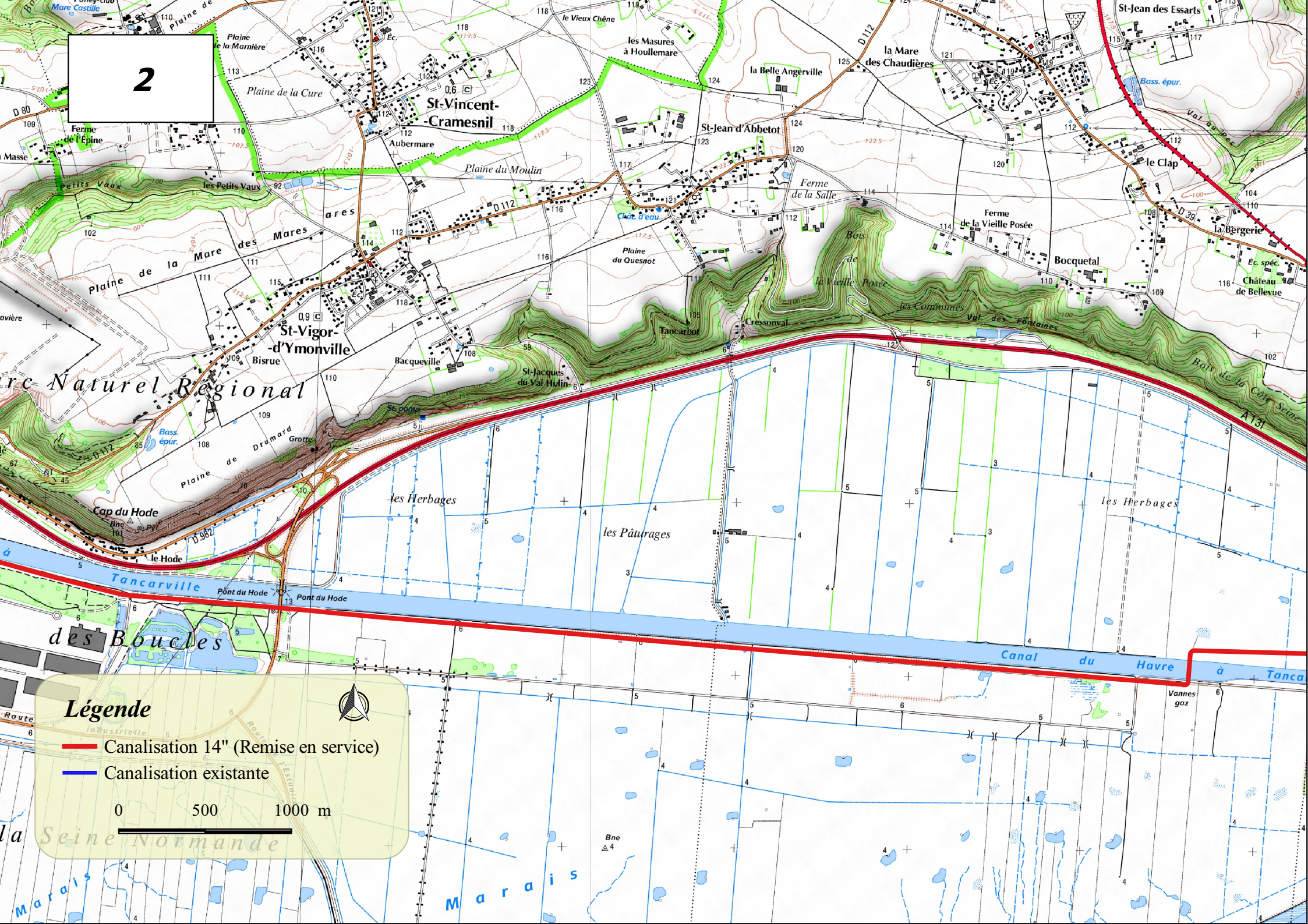
### Légende

- Canalisations 14" (Remise en service)
- Canalisations existantes

0 500 1000 m

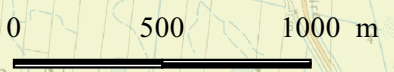


2



### Légende

- Canalisation 14" (Remise en service)
- Canalisation existante



3

### Légende

- Canalisations 14" (Remise en service)
- Canalisations existantes

0 500 1000 m

